

# Intraoperative Localisation of Ectopic Parathyroid Adenoma with Sirius Pintuition

**Authors:**

Celine Clement, Irma den Hoed and Patricia Jansen

**Hospital:**

St. Elisabeth Hospital, Tilburg, The Netherlands

## Conclusions

**The Pintuition marker can be a safe and effective method to localise ectopic parathyroid glands during focused parathyroidectomy reducing operating time and risk of complications**

### Case Description

Localization and removal of ectopic parathyroid adenoma

### Course of Treatment

64-year-old man with primary hyperparathyroidism due to an ectopic parathyroid adenoma located between the left carotid artery and the hyoid bone. The Pintuition Seed, a localization marker, was used to localise and intraoperatively remove the adenoma. No post-op complications observed.

### Diagnosis

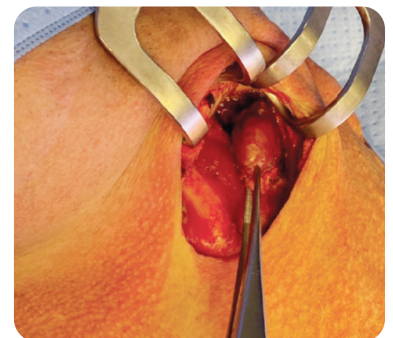
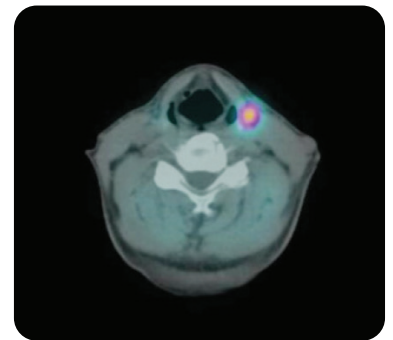
MIBI scan and US showed a 27 mm by 12 mm at level 2 abnormality not remarkable with clinical examination. Post-op histopathologic examination confirmed a parathyroid adenoma.

### Treatment

The Pintuition marker was implanted 9 days before surgery with US guidance using a 14G needle. The adenoma was successfully removed and the operation time was 36 minutes.

### Patient outcomes

One day postoperatively the patient was discharged without any complications. Blood results showed values within the normal range for albumin, calcium and a 50% reduction of PTH compared to baseline.



sirius medical 